

USER GUIDE TRADING RENKO PRODUCTS

Contenido

Best Practice.....	1
Install Trading Renko PACK.....	2
BarType Used on Charts.....	2
Enable Strategies on Chart.....	3
Trading Renko SR Template.....	3
Trend Paint Colors Indicator.....	5
WORM Scalp Version Indicator.....	5
WORM BOT Scalp Version.....	6
WORM BOT STEP STAIRS VERSION.....	7

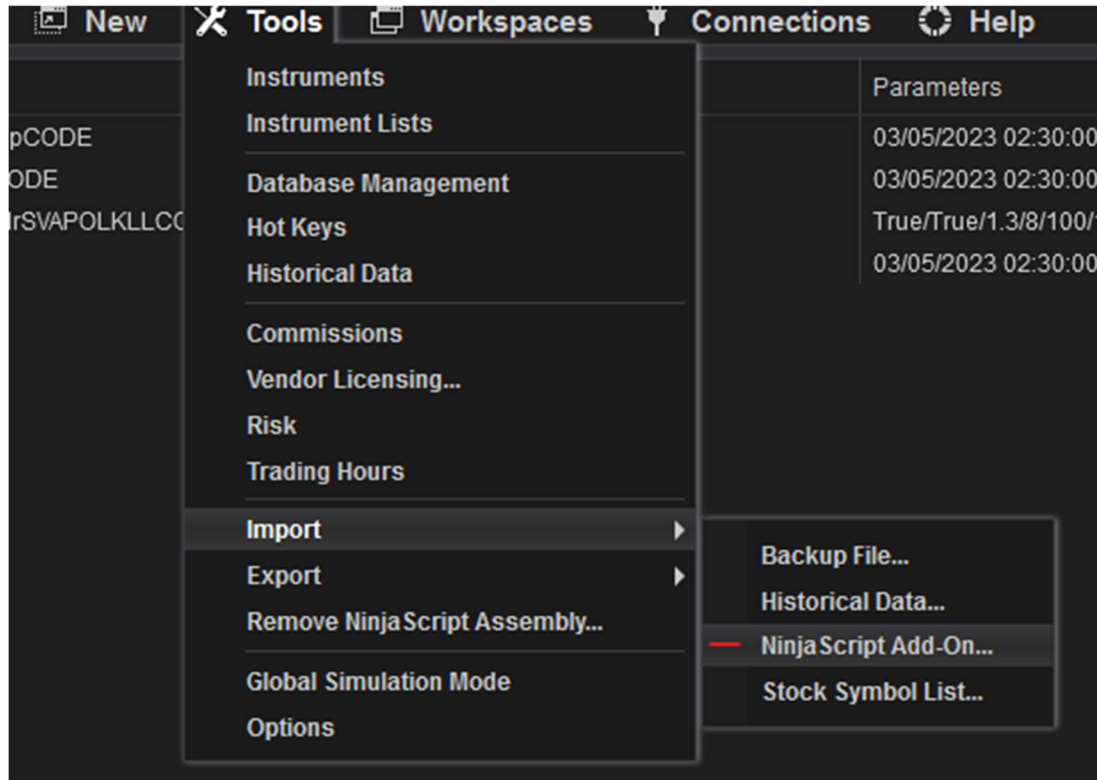
Best Practice

We have test Renko 20 chart , and unirenko 60/1/10 for wormbot scalp version algorithm using default settings.

We have test Renko 20 chart , for wormbot step stairs algorithm using default settings.

We have only test NQ financial instrument and keep searching of other financial instruments

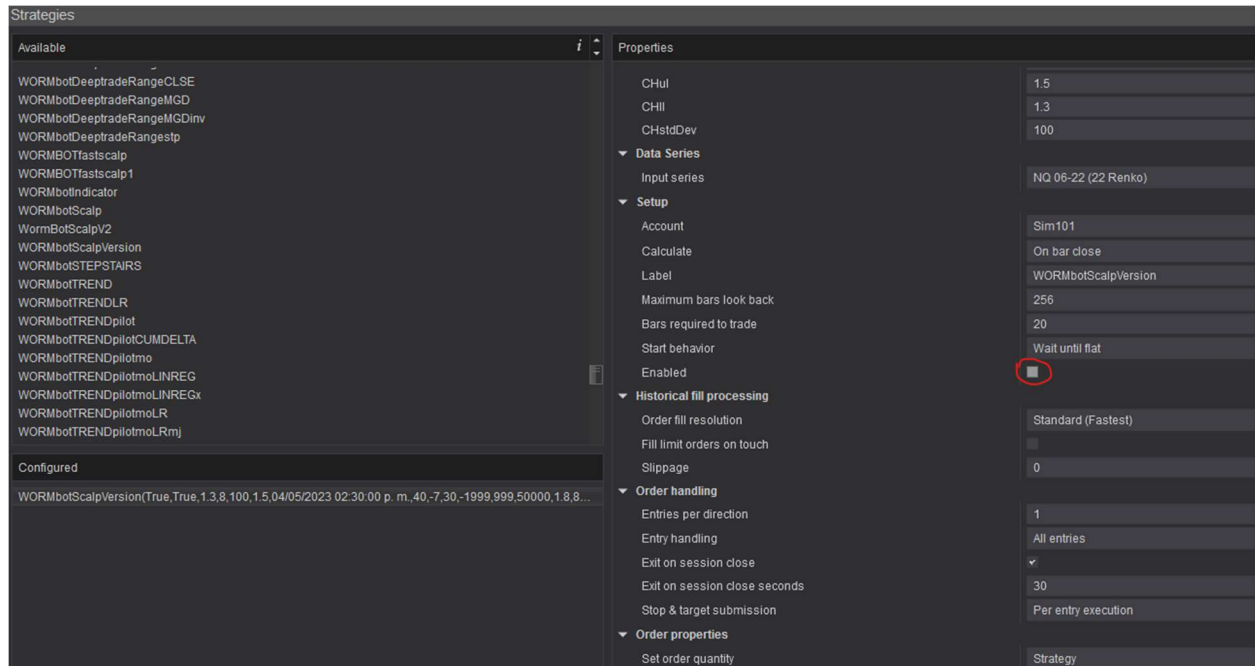
Install Trading Renko PACK



BarType Used on Charts

1. Setup 1 :Download Unirenko and Set Chart configuration to 60/1/10
2. Setup 2: Renko 20

Enable Strategies on Chart



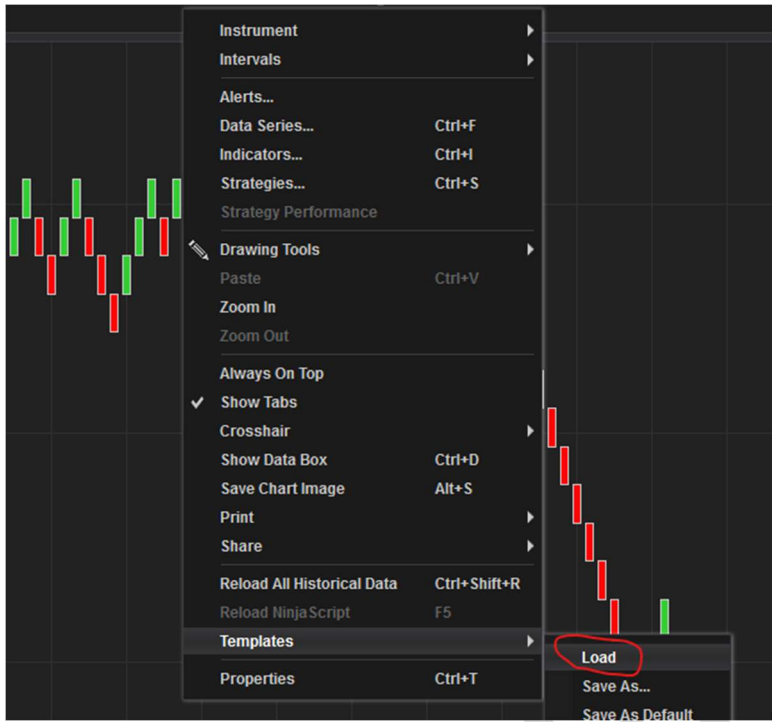
Trading Renko SR Template

1. Download file from <https://tradingrenko.co/downloads/>

2. Unzip/Extract "TradingRenkoSR.zip" file

3. Copy TradingRenkoSR.xml to C:\Users\default.LAPTOP \Documents\NinjaTrader 8\templates\Chart (check and verify the folder where you install NT8)

4. Open template on Chart



We use a sheet template to entry manually trade and we teach educational videos, subscribe for Trading Renko SR or TradingRenko PACK for more info

Entry Setup	8	6			
Time	09:51	11:25			
Price	-				
Profit	\$ 1,195.00	\$ 885.00	\$ 90.00	\$ 980.00	\$ 880.00
Trades Type	Long	Long			
Macro Previous Correction Phase					
ELLIOT ABCDE Wave					
SR MA MA Mixed UP (Z)					
Support/Resistance Formation					
Yes or No					
Entry Indicator Points					
Beginning Points					
Middle Points					
End Points					
Macro & Micro PriceAction					
DoubleTop Head and Shoulders					
Tripple Top					
Trend Line					
Triangle					
NT8Indicators(SMA) 80/20/200					
Above:Long T/BeLow :Short T					
NT8Indicators(Momentum)					
<0 or >0 : x>3 x<-3					
Asending or Desending/Divergence					
RoomSpace Analysis					
x >1 ;x<1					
Out of the Wall/BOX 'MA MI'					
Yes or No					
Historical Analysis Price Inside BOX?					
Out BOX In BOX					
PSICOLOGY AFIRMATIONS					
'I pay to see a great configuration "					
BE Estrict on exits , "never let loss run"					
If necessary exit, better configuration will come ,PATIENTE					
Exit on momentum Weakness PRICEACTION					

Trend Paint Colors Indicator

This indicator measures the force of the trend

For Longs

If vertical Bar light blue (MicroTrend Starting); If Darker blue (MicroTrend Finishing)

For Shorts

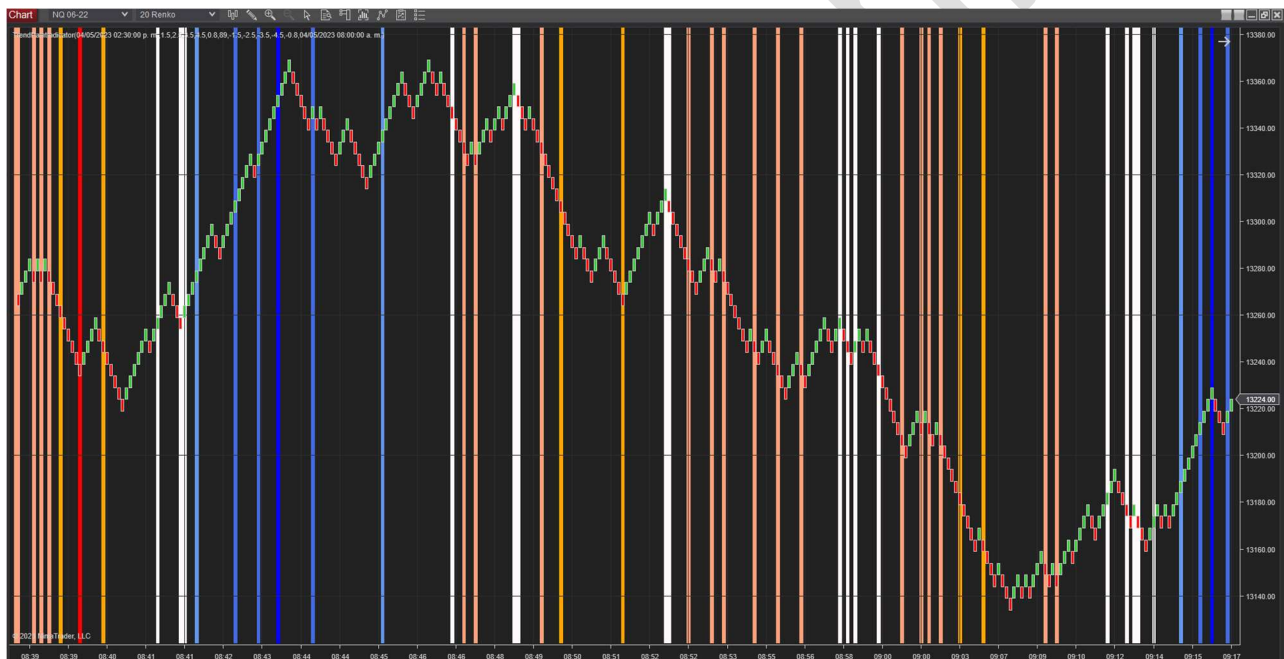
If vertical Bar light red (MicroTrend Starting); If Darker red (MicroTrend Finishing)

Choppy or Lateral Markets

If vertical Bar White (Lateral Market)

***Can complement this indicator to the template

**This indicator needs to enable it as a strategy to give the signals



WORM Scalp Version Indicator

This indicator uses the same entry signs of the WORM BOT Scalp Version , just flashes signals and its designed to trade manually with ATM strategy.

For Longs

If vertical Bar Lawn Green (EntrySignal)

For Shorts

If vertical Bar Gold (EntrySignal)

Exit Signs

Color Bar Fuchsia algorithm recommended to exit

***Can complement this indicator to the template

**This indicator needs to enable it as a strategy to give the signals

WORM BOT Scalp Version

Algorithm designed by Trading Renko Group used for intraday sections.

For Longs

If vertical Bar light Green; lightblue (EntrySignal)

For Shorts

If vertical Bar light pink; violet (EntrySignal)

Exit Signs

EXITOSZ system or EXIT ; HLsystem ; Color bar Fuchsia;Aqua

Default Parameters:

	Period	= 7;
default	LP	= 30;
exit parameter	UL	= 7; upper line
exit parameter	LL	= -7; lower line
Used for Entry Value 1	Period2	= 14;
	ProfitTarget	= 60;
	HL	= 40; Support Resistance
Period for Exit System		
	MIN_DailyVolume	= 50000;
Used for Entry Value 2	Period3	= 89;
Use 9999 value to disable	Max_Profit	= 999;
Use 9999 value to disable	Max_Loss	= -1999;
	ActiveLongTrades	= true;
	ActiveShortTrades	= true;
Momentum Longs;	MomentumL	= 1.8; lower more trades
Momentum Shorts	MomentumS	= -1.8; lower more trades
	MomentumPeriod	= 89;

	CHperiod	= 8;
	CHul	= 1.5;
	CHll	= 1.3;
	CHstdDev	= 100;
Exit parameters	EXITHl_varOHLsystem	= 40;
Exit parameters	EXITp_varOHLsystem	= 7;
Exit parameters	EXITp2_OSZsystem	= 14;
Exit parameters	EXITOSZsystem	= true;
Exit parameters	EXITHLsystem	= true;

WORM BOT STEP STAIRS VERSION

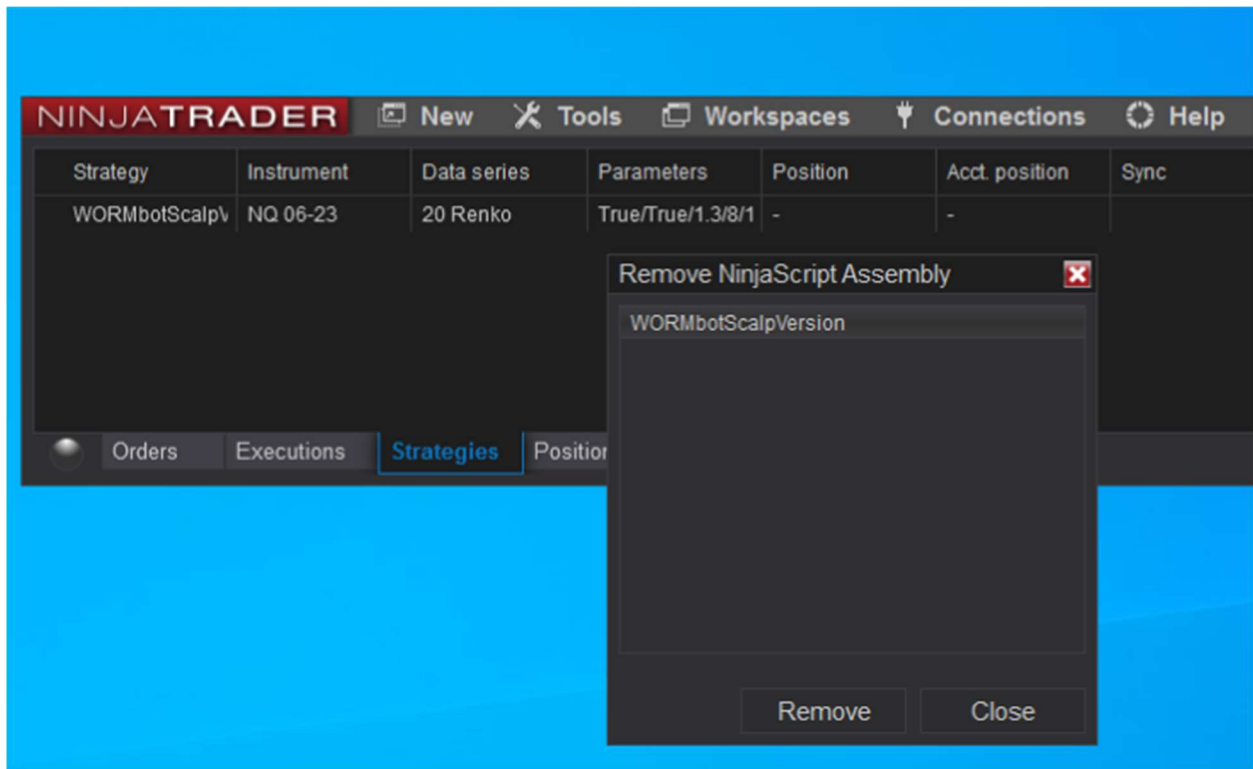
Used for day trading on futures or copy trade for index trading on other platform

Uses momentum trend to define the strength of the market and makes entries based on the momentum levels or micro trend cycles

Parameters:

	MomentumValue	= 89;
Momentum levels	L_LVL1	= 1.5;
	L_LVL2	= 2.5;
longs	L_LVL3	= 3.5;
	L_LVL4	= 4.5;
shorts	S_LVL1	= -1.5;
	S_LVL2	= -2.5;
	S_LVL3	= -3.5;
	S_LVL4	= -4.5;
Long entry upper limit of momentum trend	L_Start	= 0.8;
Short entry upper limit of momentum trend	S_Start	= -0.8;
	ProfitTarget	= 2000;
	StopLoss	= 190;
PnL Default disabled	Max_Profit	= 9999;
PnL Default disabled	Max_Loss	= -9999;

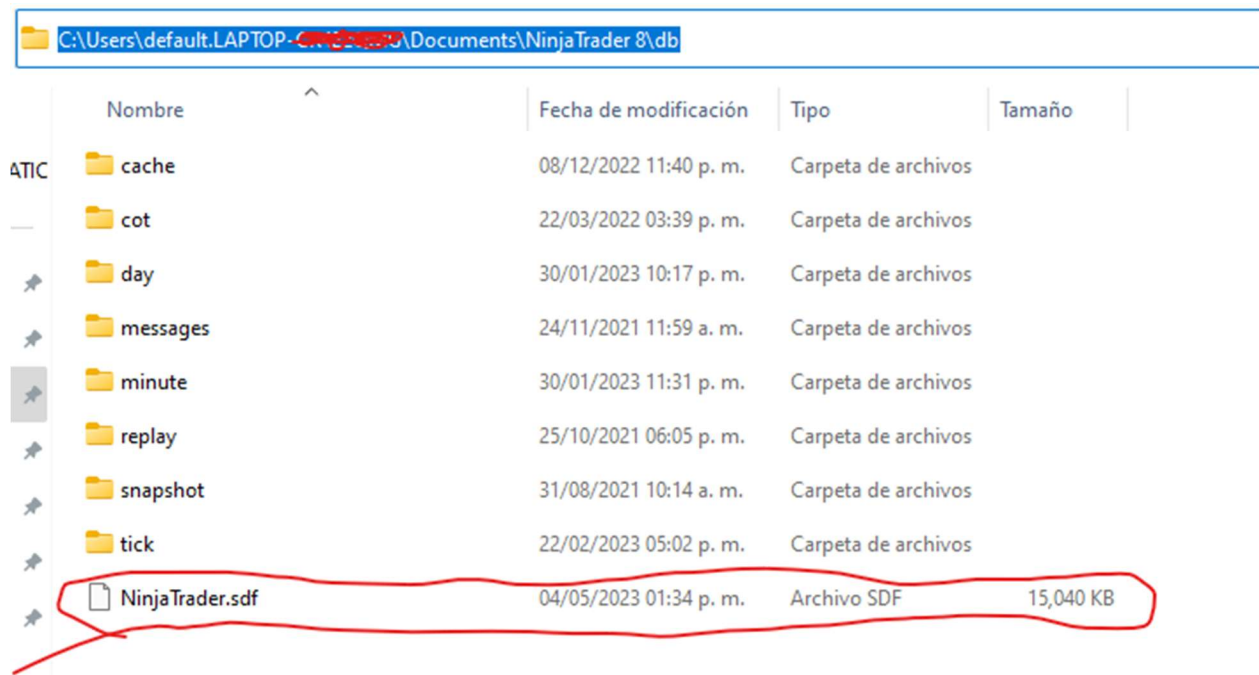
Remove ninja script Addons



Trading

Remove Backtesting db data

If your historical backtesting or market replay and freezes or takes so long to load, delete this file to quick load



	Nombre	Fecha de modificación	Tipo	Tamaño
ATIC	cache	08/12/2022 11:40 p. m.	Carpeta de archivos	
—	cot	22/03/2022 03:39 p. m.	Carpeta de archivos	
➤	day	30/01/2023 10:17 p. m.	Carpeta de archivos	
➤	messages	24/11/2021 11:59 a. m.	Carpeta de archivos	
➤	minute	30/01/2023 11:31 p. m.	Carpeta de archivos	
➤	replay	25/10/2021 06:05 p. m.	Carpeta de archivos	
➤	snapshot	31/08/2021 10:14 a. m.	Carpeta de archivos	
➤	tick	22/02/2023 05:02 p. m.	Carpeta de archivos	
➤	NinjaTrader.sdf	04/05/2023 01:34 p. m.	Archivo SDF	15,040 KB

Trading